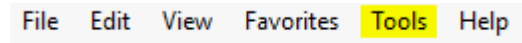


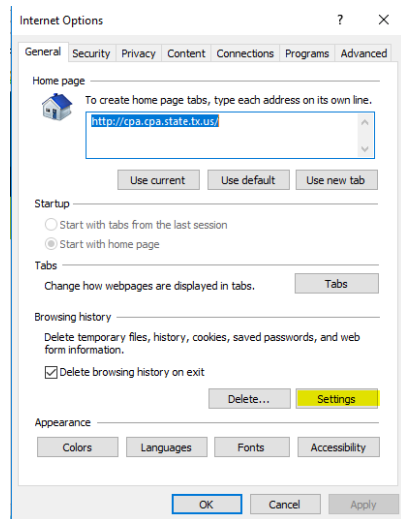
If you are, having issues getting the latest version of the SEGA Website please try these solutions for **Internet Explorer** and **Chrome**.

Internet Explorer

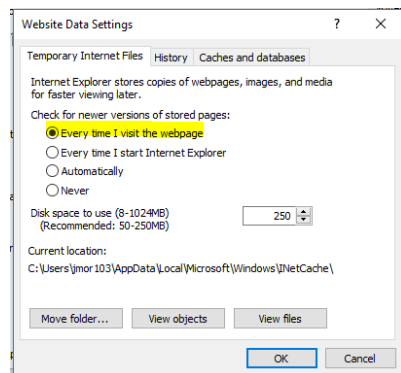
Under **Tools** Tab select **Internet Options**



From **Internet Options** select **Settings**



From **Website Data Settings** select **Every time I visit the webpage** then press Ok button



Chrome press **Ctrl + F5** (Newest version of the SEGA Website will reload)